



LIVE LINK

CONNECTED

LIVELINK | TELEMATICS & MACHINE FLEET MONITORING SYSTEM

Work Smarter



LIVELINK MAKES IT EASY.

JCB LIVELINK, NOW STANDARD FOR 5 YEARS ON APPLICABLE MACHINES, USES THE LATEST IN TELEMATIC TECHNOLOGY TO HELP YOU MONITOR AND MANAGE YOUR MACHINE FLEET REMOTELY ANYWHERE IN THE WORLD VIA WEB, EMAIL OR MOBILE. SO, HOWEVER BIG OR SMALL AND HOWEVER DIVERSE, LIVELINK CAN RADICALLY IMPROVE THE EFFICIENCY, PRODUCTIVITY AND SECURITY OF ALL YOUR JCB AND NON JCB MACHINE FLEET.



Simplicity.

Take the effort out of managing your machine fleet by letting LiveLink do the work. Get real-time health alerts, machine service alerts and incorrect operation alerts.



Profitability.

LiveLink lowers servicing and running costs by ensuring your machines are operated to their optimum performance, reducing fuel consumption and unnecessary machine wear. For rental customers, LiveLink helps you manage your chargeable hours for maximum revenue.



Efficiency.

Use LiveLink to prioritise, plan and monitor your servicing around your customers or jobs. It also lets you react quicker to machine failures with health alerts.



Security.

LiveLink helps to keep your machines safe and improves control over machine misuse. Real-time geo-fencing alerts tell you when machines move out of predetermined zones set by you. Curfew alerts inform you of unauthorised usage.



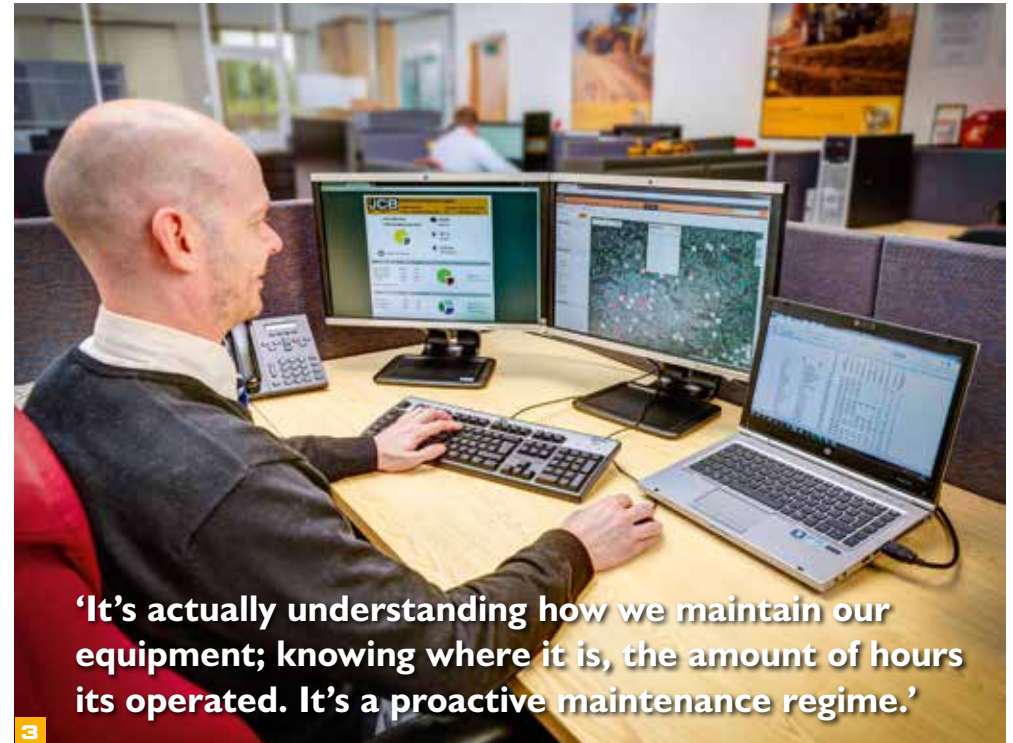
LiveLink allows fleet owners to seamlessly import non-JCB fleet data allowing businesses to monitor entire fleets of equipment regardless of brand. LiveLink is fully compliant with AEMP Telematics Standard VI.2 and ISO15143-3.

LIVELINK OPTIMISES UPTIME.

ACCURATE MONITORING OF MACHINE HOURS AND SERVICE ALERTS IMPROVE MAINTENANCE PLANNING. TECHNICAL ALERTS AND MAINTENANCE HISTORY DATA HELP YOU MANAGE YOUR MACHINES HEALTH TO KEEP YOUR MACHINES RUNNING FOR MAXIMUM UPTIME AND RETURN ON INVESTMENT.

More knowledge equals better machine management.

- 1 Machine health and service alerts help to prioritise planning of engineer and routine service.
- 2 Early warnings of incorrect machine operation and poor daily maintenance with detailed machine history enables you to plan what work is needed on your machine before it returns to your yard.
- 3 LiveLink is linked to your dealer and service centre with advanced diagnostic capability, enabling them to come to your assistance quicker.
- 4 For the rental customer, detailed machine hours, machine faults and machine malpractice are recorded remotely, helping you process your machine quicker for quick turnaround.



'It's actually understanding how we maintain our equipment; knowing where it is, the amount of hours its operated. It's a proactive maintenance regime.'



‘We’ve got a real-time record of the hours the machine is working and how much fuel is being used. We can plan our servicing knowing when the machine will reach the end of its hire period.’



LIVELINK SAVES YOU MONEY.

BY PROVIDING INFORMATION LIKE IDLE TIME MONITORING AND REALTIME FUEL CONSUMPTION, LIVELINK HELPS FLEET OPERATORS MANAGE THEIR WHOLE LIFE COST OF OWNERSHIP, SAVING MONEY AND IMPROVING PRODUCTIVITY.

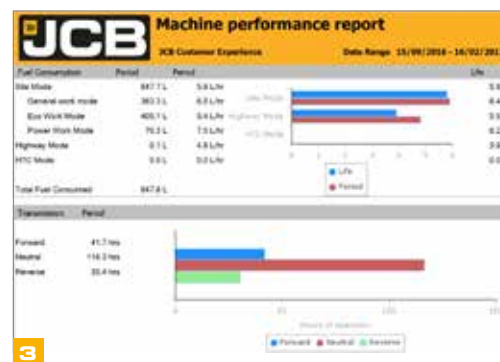
Drive down costs. Drive up productivity.

- 1 To ensure your fleet is delivering it's maximum return on investment LiveLink helps you manage your chargeable hours for maximum revenue.
- 2 Understanding the work needed on your machine before it comes back into the yard allows rental customers to turn around machines quicker, greatly enhancing rental revenue.
- 3 Fleet management utilisation information helps ensure machines are running at maximum efficiency to provide the best return on investment.

- 4 Power band management lets you monitor machine usage including hours worked in power band, indicating the extent of load on the machine.
- 5 Customised reports by day, week or month let you manage your fleet anywhere, helping to control costs and improve productivity.
- 6 Fuel reporting and idle time monitoring can help with better site management for your customers.



4



3



5



“Through monitoring idle time, we found our excavator was idling too long between loads. By improving site haul road quality, we have reduced idle time and increased output by 20%”

LIVELINK PROTECTS.

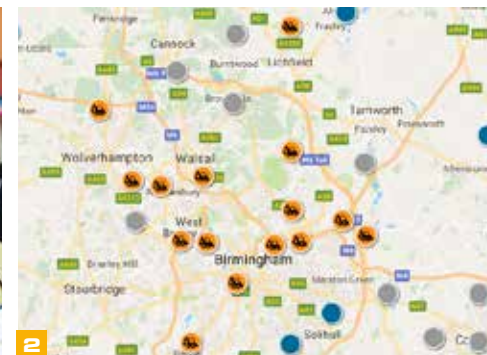
LIVELINK HELPS TO KEEP YOUR MACHINES SAFE AND IMPROVES CONTROL OVER MACHINE MISUSE. REAL-TIME GEOFENCING ALERTS TELL YOU WHEN YOUR MACHINES MOVE OUT OF PREDETERMINED ZONES WHILE CURFEW ALERTS INFORM YOU OF UNAUTHORISED USAGE.

Keep your fleet safe and secure.

1 An easy-to-use interface lets you draw a geo-fence which then alerts you immediately when a machine has moved out of its predetermined operating zone.

2 Real-time curfew and tow-away alerts inform you immediately that a machine is switched on or moved illegally. A back-up battery keeps tracking the machine even with the engine is switched off.

3 Remote PIN control allows for remote changing of the immobiliser pin code to prevent unauthorised use. Safety warnings tell you about poor machinery operation and safety related defects. JCB have seen up to a 10% reduction on insurance premiums on machines fitted with LiveLink.



‘Having a machine stolen is the worst day. LiveLink gives us the confidence that if the worst should happen, we can take **FAST** and immediate action to recover our asset.’

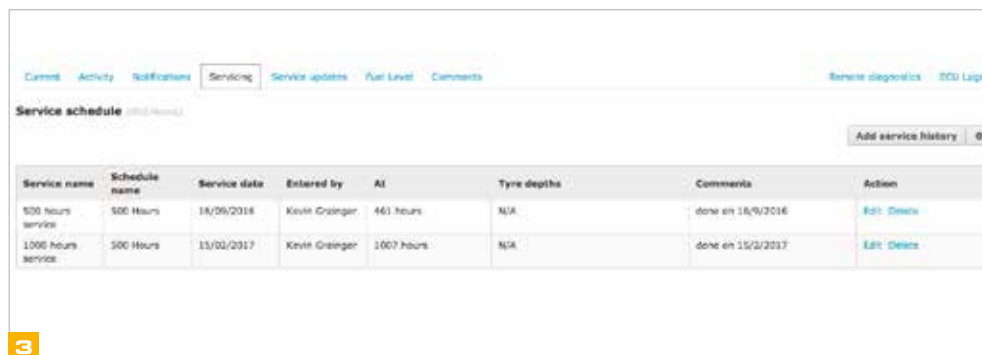


LIVELINK MANAGES MAINTENANCE.

ACCURATE MONITORING OF HOURS AND SERVICE ALERTS IMPROVE MAINTENANCE PLANNING AND COORDINATION WITH YOUR CUSTOMERS, WHILE REAL-TIME LOCATION DATA HELPS YOU MANAGE YOUR FLEET. CRITICAL MACHINE ALERTS AND MAINTENANCE HISTORY RECORDS ARE ALSO AVAILABLE.

Maximising machine availability.

- 1 Accurate hours monitoring and service maintenance reminders help improve maintenance planning.
- 2 Real-time location data helps plan and implement maintenance.
- 3 Service history records help you keep track of a machine throughout its life.
- 4 Critical machine alerts inform immediately of non-routine attention. Alerts indicating low oil pressure, low coolant level, blocked air filter and high coolant temperature help with proactive maintenance, avoiding problems later.



3

Service name	Schedule name	Service date	Entered by	AI	Tyre depths	Comments	Action
500 hours service	500 Hours	18/09/2016	Kevin Greinger	461 hours	N/A	done on 18/9/2016	Edit Delete
1000 hours service	500 Hours	15/02/2017	Kevin Greinger	1007 hours	N/A	done on 15/2/2017	Edit Delete



Remote diagnostics help to improve engineer planning resulting in faster response times and better first time fix.



LIVELINK FOR POWER GENERATION.

JCB LIVELINK FOR POWER PROVIDES ALL OF THE NECESSARY DATA NEEDED TO OPERATE, MAINTAIN AND SECURE A POWER GENERATOR REMOTELY, INCREASING PRODUCTIVITY AND EFFICIENCY ALL THE WHILE REDUCING DOWNTIME AND RUNNING COSTS.

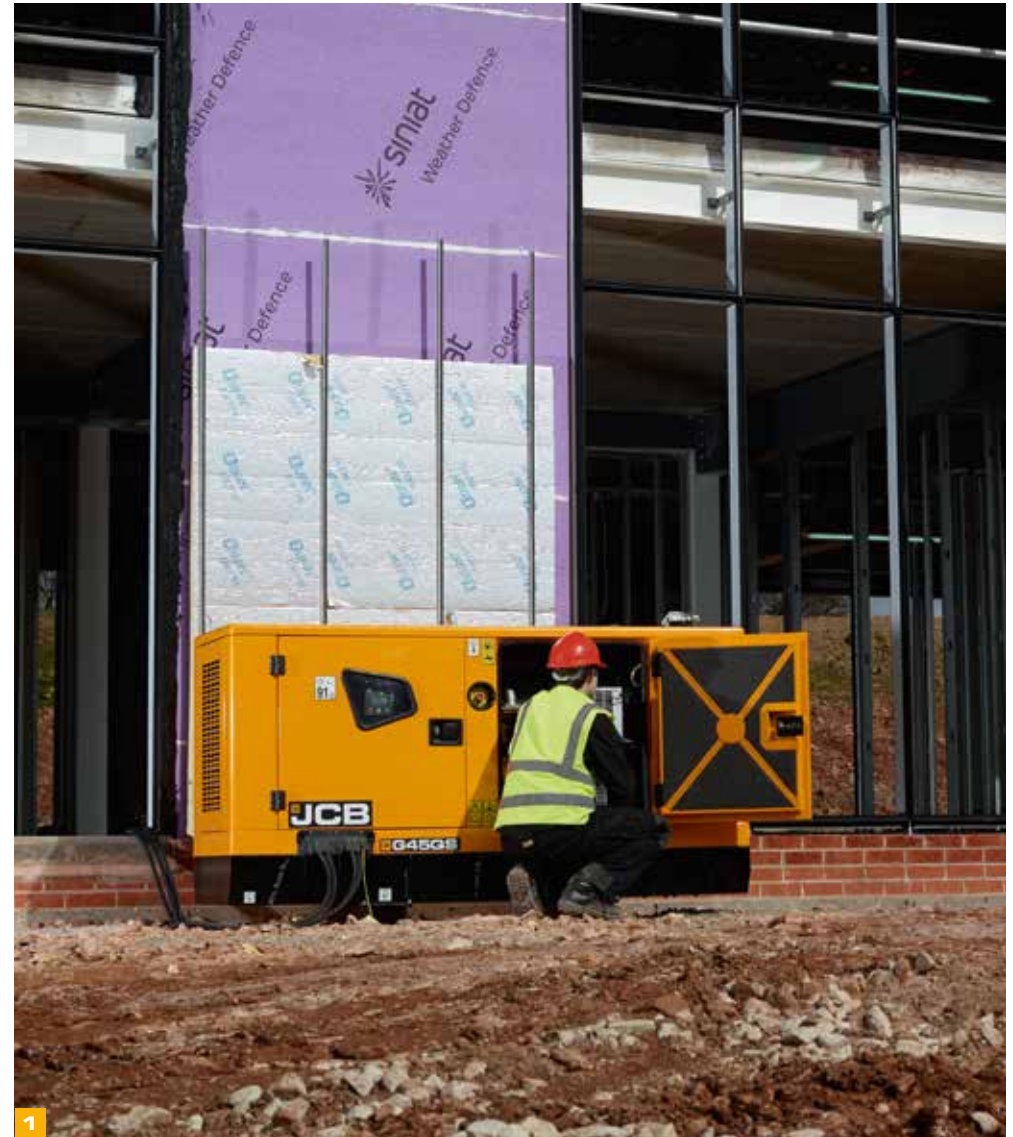
Knowledge is power.

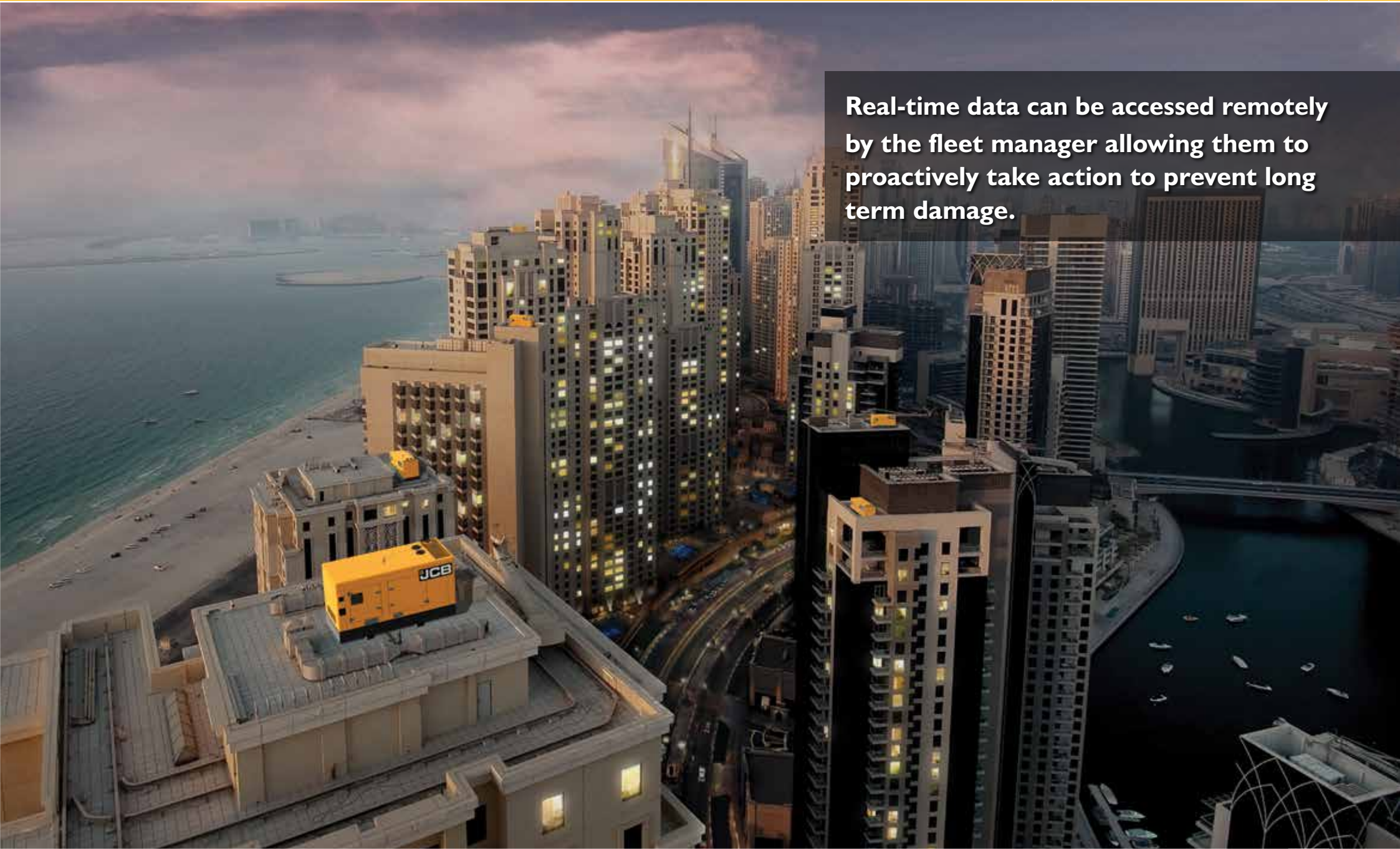
- 1 Performance information such as average amps, peak amps, total kW, kVA & kVAr and utilisation can be remotely monitored allowing you to identify imbalanced loads and whether the unit is under or over loaded.
- 2 Instant alerts of alarms or shutdowns via text and email allows a fleet manager to react quickly and gain better visibility of unit issues.
- 3 Utilisation information can be obtained to identify how many hours are spent at 'unhealthy' loads. This information can also be used by fleet owners to surcharge units exceeding fixed hour contracts.

- 4 For greater control of your unit, fuel levels can be checked remotely allowing you to refuel your generator only when required.

Secure your investment.

- 5 Geo-fencing allows you to set geographical parameters for your machine and notifying you when your machine moves outside of the defined area.





Real-time data can be accessed remotely by the fleet manager allowing them to proactively take action to prevent long term damage.

LIVELINK KEEPS YOU CONNECTED.

JCB LIVELINK USES THE LATEST SATELLITE TECHNOLOGY TO HELP YOU MONITOR AND MANAGE YOUR MACHINE REMOTELY ANYWHERE IN THE WORLD VIA WEB, EMAIL OR MOBILE. SO WHETHER YOU'RE AN OWNER OPERATOR OR RUN A FLEET, LIVELINK KEEPS YOUR JCB AND NON-JCB FLEET CONNECTED ALL DAY, EVERYDAY.

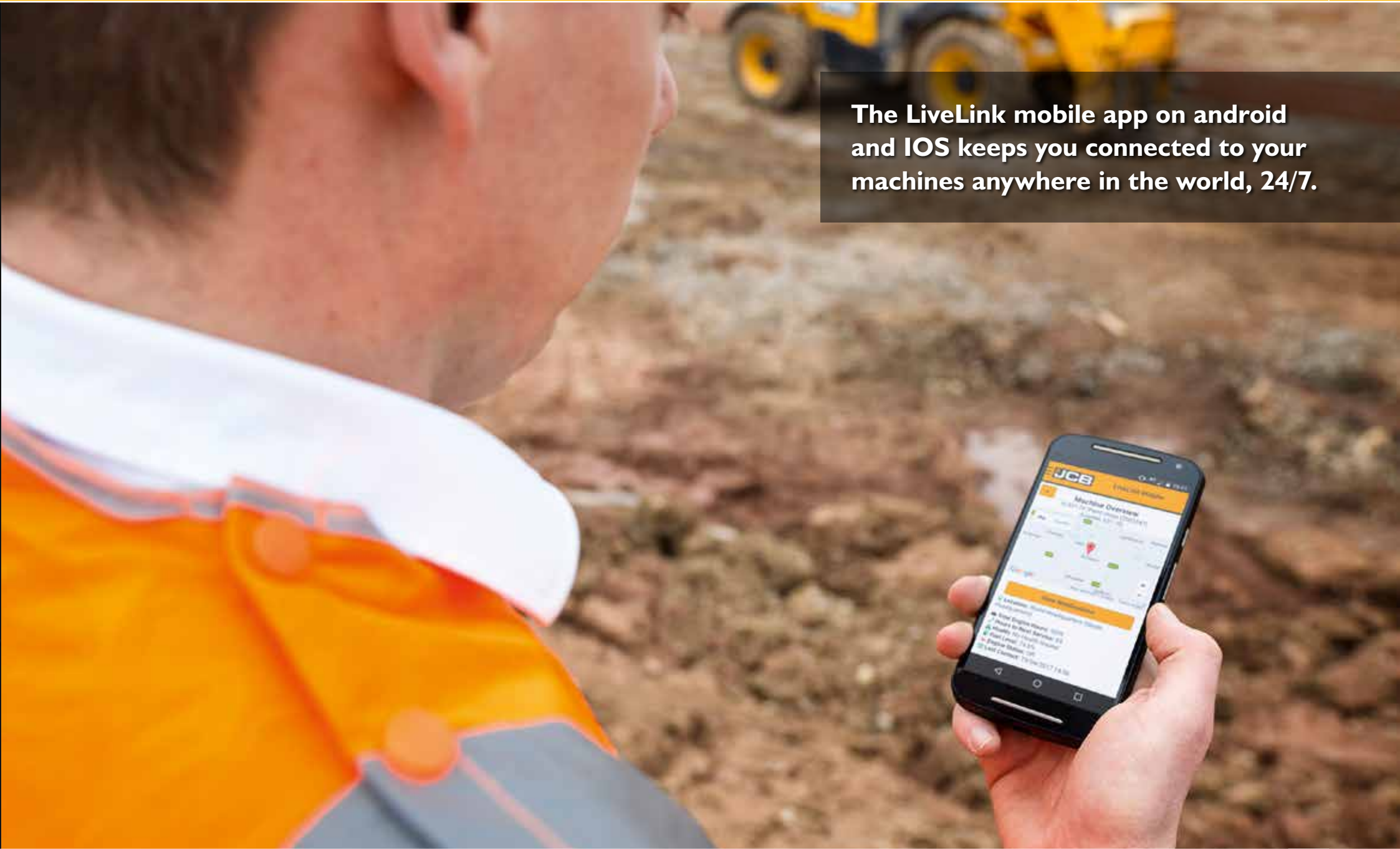
Wherever you are, LiveLink keeps you connected.

- 1 Recently launched LiveLink Control Tower allows customers to view all their machinery including other brands by importing data into the LiveLink website using their AEMP or ISO credentials. This allows for full fleet management.
- 2 LiveLink provides secure access to an easy to use, intuitive web portal but it also allows you to integrate the data into your own IT system for added convenience.

- 3 JCB provides several Developer Toolkit Services to assist integrating machine data into existing systems and rental or fleet management software.
- 4 LiveLink is fully compliant with AEMP Telematics Standard V1.2 and ISO15143-3.



The LiveLink mobile app on android and IOS keeps you connected to your machines anywhere in the world, 24/7.



LIVELINK TO THE FUTURE.

JCB IS COMMITTED TO THE ONGOING DEVELOPMENT OF THE LIVELINK TELEMATICS SYSTEM. THIS ENABLES YOU TO FOCUS ON THOSE ASPECTS OF YOUR FLEET THAT HAVE THE GREATEST VALUE TO YOUR BUSINESS.

An ongoing commitment to your business.

- 1 The LiveLink development never stops, JCB's dedicated telematics team work tirelessly to ensure our customer has the best telematics system to suit their business needs.
- 2 As well as JCB dealers proactively monitoring your fleet, JCB also keep an eye on it via an Uptime Plus System at their World Parts Centre. That's total support for ultimate peace of mind.
- 3 For machines not currently fitted with LiveLink, LiveLink Lite can be fitted as an aftermarket install.



WE'RE HERE TO SUPPORT.

WE'LL PROVIDE YOU WITH FIRST CLASS SUPPORT AND ASSISTANCE TO SUIT YOUR EXACT BUSINESS NEEDS RIGHT FROM DAY ONE. SO WHEREVER YOU ARE , YOUR MACHINE WILL ALWAYS PERFORM TO ITS FULL POTENTIAL - ONE OF THE MANY REASONS WHY STARTING A WORKING RELATIONSHIP WITH JCB IS A GREAT BUSINESS DECISION.

1 All our dealers have instant access to factory expertise and technical support to provide you with maximum machine uptime, day or night.

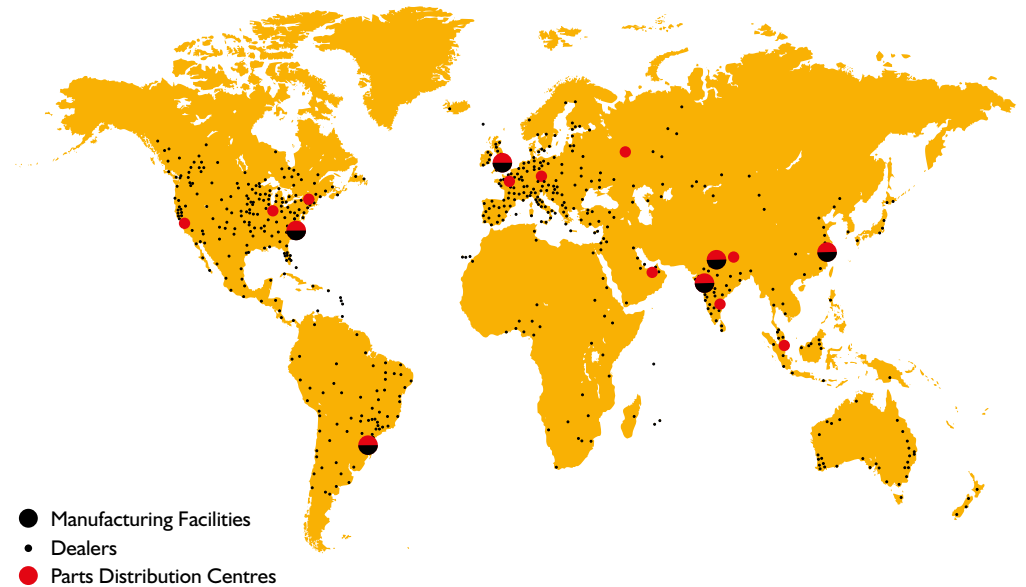
2 The global network of JCB Parts Centres is another model of efficiency; with 17 regional bases, we can deliver around 95% of all parts anywhere in the world within 24 hours. To keep you and your customers moving worldwide, JCB have over £100m of stock and over 240,000 live parts available to order.

3 JCB Assetcare offers comprehensive extended warranties and service agreements, as well as service-only or repair and maintenance contracts. Irrespective of what you opt for, our maintenance teams around the world charge competitive labour rates, and offer non-obligation quotations as well as fast, efficient insurance repair work.

4 JCB products are sold and supported by a network of 770 dealers with 2,200 depots to over 150 countries worldwide, that ensures you have a 'one stop shop' for parts and service.

5 Finance and Insurance specialists are always on-hand to provide fast, flexible, competitive quotes. Naturally, packages can be tailored to suit your specific needs.

Note: JCB LIVELINK and JCB ASSETCARE may not be available in your region, so please check with your local dealer.



THE LIVELINK RANGE.

JCB LIVELINK									
	Location	Engine On	Fuel Used	Idle Time	Engine Load	Duty Cycle Data	Fuel Level	Diagnostics	Remote PIN Management
Tracked Excavators	●	●	●	●	●	●	●	●	●
Wheel Loaders	●	●	●	●	○	●	●	●	○
Loadall Telehandler	●	●	●	●	●	●	●	●	●
Backhoe Loader	●	●	●	●	●	●	●	●	●
Compact Excavators 4-10 Tonnes	●	●	●	●	●	●	●	●	●
Fastrac	●	●	●	●	○	●	●	●	○
Telescopic Wheel Loader	●	●	●	●	●	●	●	●	○
Site Dumpers	●	●	●	●	●	○	○	●	○
Generators	●	●	○	●	●	●	●	●	✘
Teletruk	●	●	●	●	●	○	●	●	○
Compaction	●	●	●	●	●	○	●	●	○
Hydradig	●	●	●	●	○	●	●	●	●
Compact Loadall (525-60)	●	●	●	●	●	○	●	●	○
JCB Access Electric Scissors	●	●	✘	✘	✘	✘	✘	○	✘
JCB LIVELINK LITE									
Skid Steer Loaders	●	●	○	○	○	○	○	○	○
Tandem Roller, Walk Behind Roller	●	●	○	○	○	○	○	○	○
Mini Excavators 8008 to 8035	●	●	○	○	○	○	○	○	○
ICX	●	●	○	○	○	○	○	○	○
520-40	●	●	○	○	○	○	○	○	○

● Standard ○ Optional ✘ Not Applicable

LiveLink specification dependent on model type and region - please check with your local dealer or JCB representative for the latest details.





ONE COMPANY, OVER 300 MACHINES.

Your nearest JCB dealer

LIVELINK | TELEMATICS & MACHINE FLEET MONITORING SYSTEM
Work Smarter

JCB Sales Limited, Rocester, Staffordshire, United Kingdom ST14 5JP.
Tel: +44 (0)1889 590312 Email: salesinfo@jcb.com
Download the very latest information on this product range at: www.jcb.com

©2009 JCB Sales. All rights reserved. No part of this publication may be reproduced, stored in a retrieval system, or transmitted in any form or by any other means, electronic, mechanical, photocopying or otherwise, without prior permission from JCB Sales. All references in this publication to operating weights, sizes, capacities and other performance measurements are provided for guidance only and may vary dependant upon the exact specification of machine. They should not therefore be relied upon in relation to suitability for a particular application. Guidance and advice should always be sought from your JCB Dealer. JCB reserves the right to change specifications without notice. Illustrations and specifications shown may include optional equipment and accessories. All images are correct at time of print. The JCB logo is a registered trademark of J.C. Bamford Excavators Ltd.

