



ELECTRIC SCISSORS

Platform height 4.6m (15'1") to 13.8m (45'3")



ACCESS high quality, world-class equipment.

Whilst our achievements to date have been considerable, at JCB we believe in always looking to the next development. We continue to innovate and push the boundaries to give our customers the best equipment possible. Designed using 70 years of engineering and manufacturing experience, the new electric scissor range from JCB Access has been developed to meet the needs of rental companies and contractors worldwide. Every model has been certified to EN280 for CE conformance ensuring the highest product quality standard.

Greater productivity and performance.

1 Our control cradle design allows use on all sides of the basket and enables easy operation from both in the basket and on the ground.

2 The controls can be hooked on to any side of the machine or can be held left or right handed for easy operation.

3 A waterproof cover on the power to platform outlet protects the socket, ensuring it is ready to use.

4 Easy to use spring clips allows the platform rails to fold down for manoeuvring in confined spaces.

Easy to view charge level indicator keeps you informed of battery status.





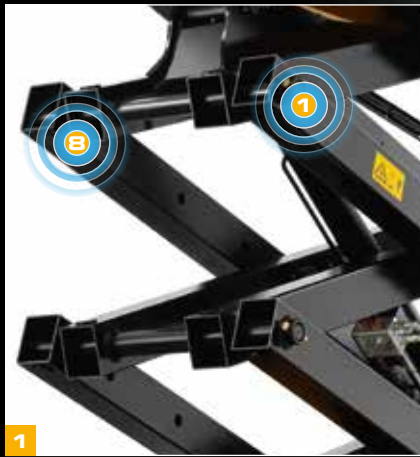
JCB

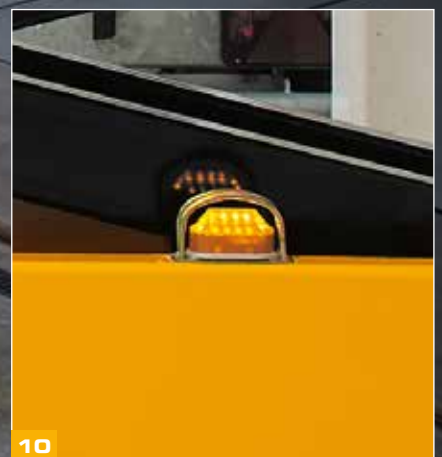
S26 32E

ACCESS high quality, world-class equipment

Designed for reliability. Built to last.

- 1 Full pivot boss design on scissor pack provides proven stability and durability based on our engineering experience with other JCB machines.
- 2 Our experience of electronics enabled us to design a highly durable and reliable control system incorporating latest components with high levels of in built protection.
- 3 Unique to JCB, our battery and hydraulic door wear pads ensure the weight is supported whilst closed, preventing the doors dropping over time.
- 4 Again, using our experience on other equipment, we've included motor protection plates to protect these high cost components from collision damage.
- 5 An automotive style foot pedal to release the extension deck provides intuitive and ergonomic operation.
- 6 The scissor sliding pivots are fully encapsulated in a large nylon block for added stability.
- 7 Robust pothole protection struts aid durability of the mechanism maximising uptime over the machine's life.
- 8 A button wear pad in between each scissor section stops metal to metal contact when fully closed.
- 9 Industry standard componentry to allow quick integration of product into existing rental fleets.
- 10 Chassis warning lights are protected from accidental damage, maximising uptime.





ACCESS high quality, world-class equipment



Easier to use.

- 1 Platform outlet in the basket makes connecting power tools easy.
- 2 The ergonomically designed door handle makes for easier and safer entry, even with gloved hands.
- 3 Scissor slide block fully encapsulates the scissor pin allowing smoother operation and increased durability.
- 4 The roller design for the extension deck requires minimal effort to extend or retract and the foot pedal allows easy use of deck extension whilst at height.
- 5 Winch point on the front of the chassis supports easier loading and unloading.
- 6 Controller cradle design allows for off machine operation, ideal for maneuvering through confined areas.
- 7 Large handle on battery isolator means it can be operated whilst wearing gloves.



Safety first.

1 All safety systems on our machines meet the latest legislation.

2 Emergency descent handle is consistently placed at rear of all machines in the range, allowing access even when the machine is positioned tight against a wall.

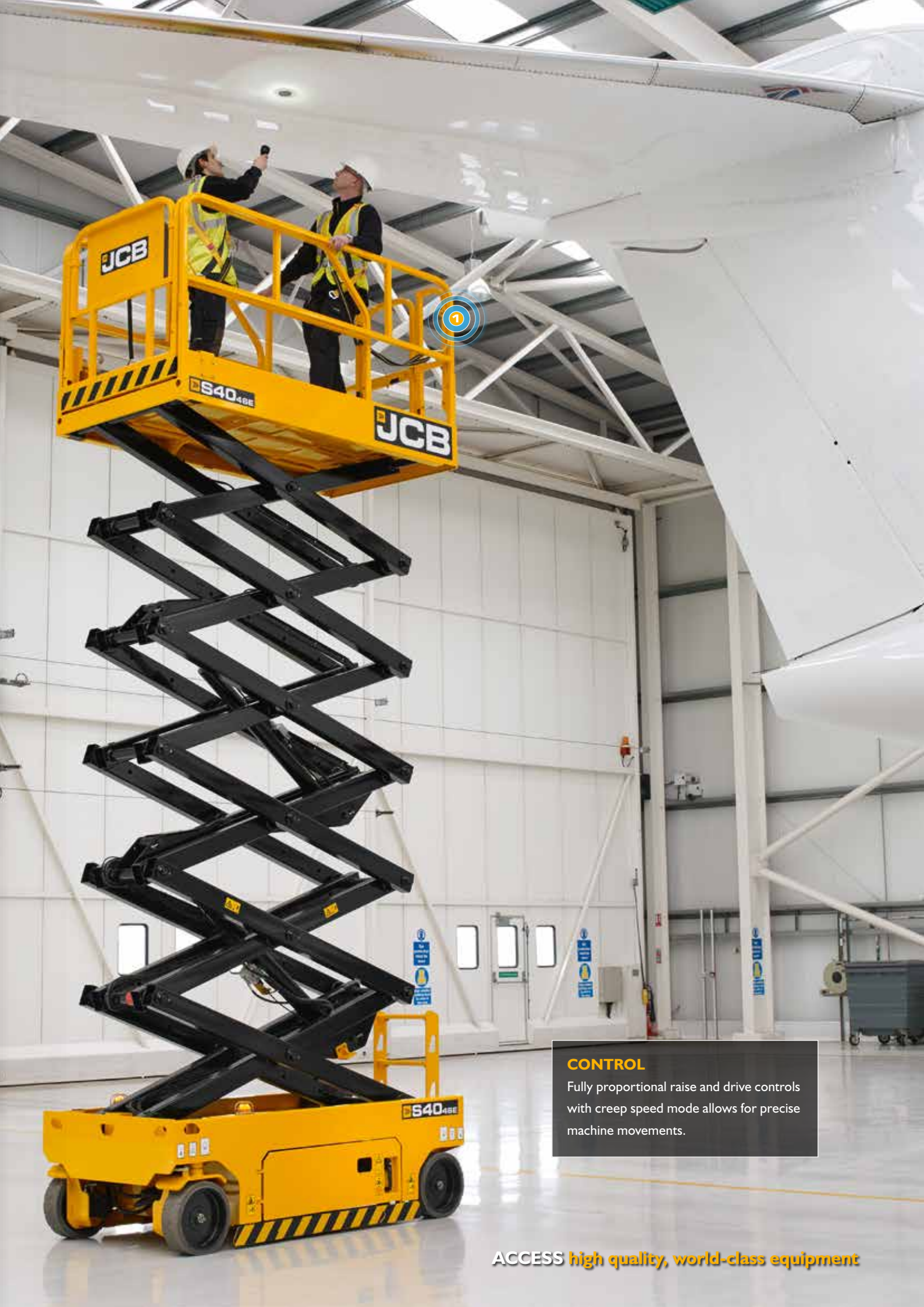
Similarly, the emergency brake release handle is also accessed at the rear of machine.

3 The pothole protection system is a key part of the safety system, only allowing the machine to raise once it is fully deployed. Our design is robust and well protected to ensure trouble free operation.

4 As the basket lowers to near the ground a safety stop and 3 second delay reminds the operator to check surroundings before fully closing the scissor pack.

5 High grip step design based on JCB earth moving equipment for safe entry and egress.





CONTROL

Fully proportional raise and drive controls with creep speed mode allows for precise machine movements.

ACCESS high quality, world-class equipment

ACCESS industry leading customer support 24/7.

In the tough business world where the customer rightfully expects the very best in machine back-up and a complete package of value added solutions, JCB delivers. With 2,200 depots and trained engineers and technicians globally JCB can deliver the unrivalled back-up that the powered access market has been waiting for.

ACCESS same day engineer visits.

With products built and certified to the highest standard using high quality components for ease of servicing, the need for an engineer will be minimal. Should the occasion arise however, we'll get a fully trained one to you the very same day.



ACCESS same day parts availability.

Using genuine JCB, high quality, durable and reliable parts, JCB Access equipment just keeps on going. When you do need to change any part, you can rest assured we will do our utmost to get you a genuine JCB replacement within 24 hours. Delivered from one of our 17 parts centres direct to the supporting JCB dealer.

ACCESS same day technical support.

JCB Access equipment has been designed to be safer and simpler to use. If for whatever reason you do need help with any technical issue, there'll be a friendly and helpful voice only a phone call away 24/7.





ACCESS industry leading customer support 24/7.



ACCESS smarter working with LiveLink.

JCB's optional LiveLink telematics system enables you to manage a single machine or whole fleet more effectively. It provides real time information about machine maintenance, working history and unauthorised usage, putting you in total control.



ACCESS fast, flexible finance.

As a valued JCB customer, you have access to finance options from JCB Finance. With over 45 years' experience in providing asset finance to UK businesses, JCB Finance can offer you fast, competitive solutions to make buying JCB easy.

ACCESS faster, competitive insurance.*

JCB Insurance have the specialist knowledge and understanding that allows us to react quicker than the rest of the insurance industry. Our friendly experts are trained to provide you with an insurance package tailored to your business at the right price.



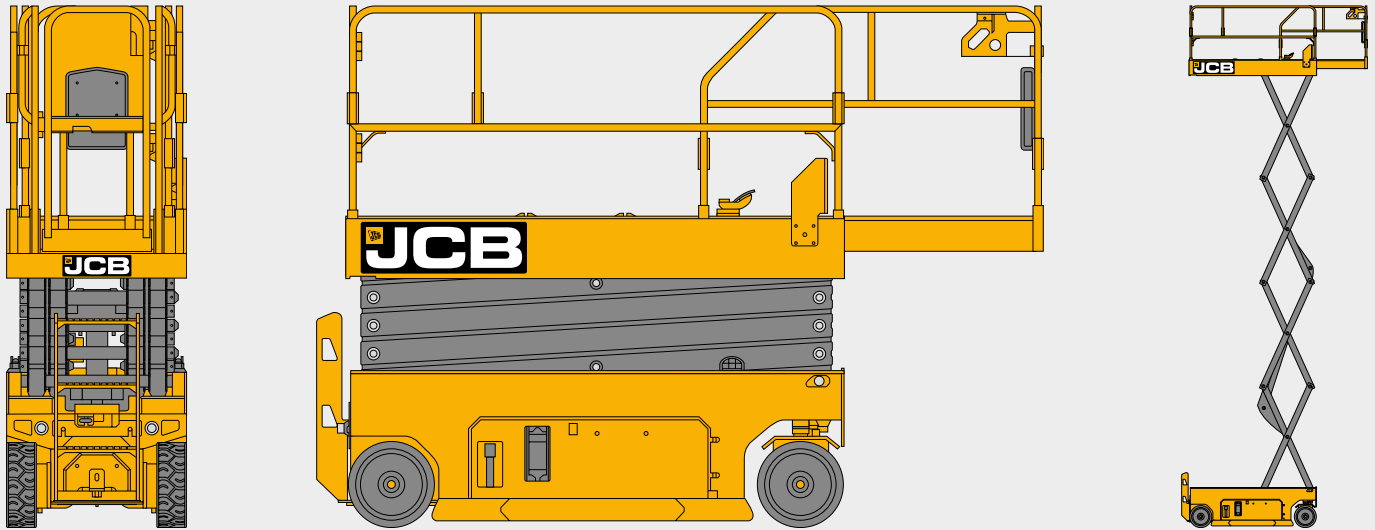
ACCESS a full range of rental products.

With a range of over 300 machines from telescopic handlers to generators, you can be sure that JCB understands your market and has a full range of rental products to support you and your business.

*Subject to availability.

ACCESS industry leading customer support 24/7.

DIMENSIONS



DIMENSIONS – ELECTRIC SCISSORS

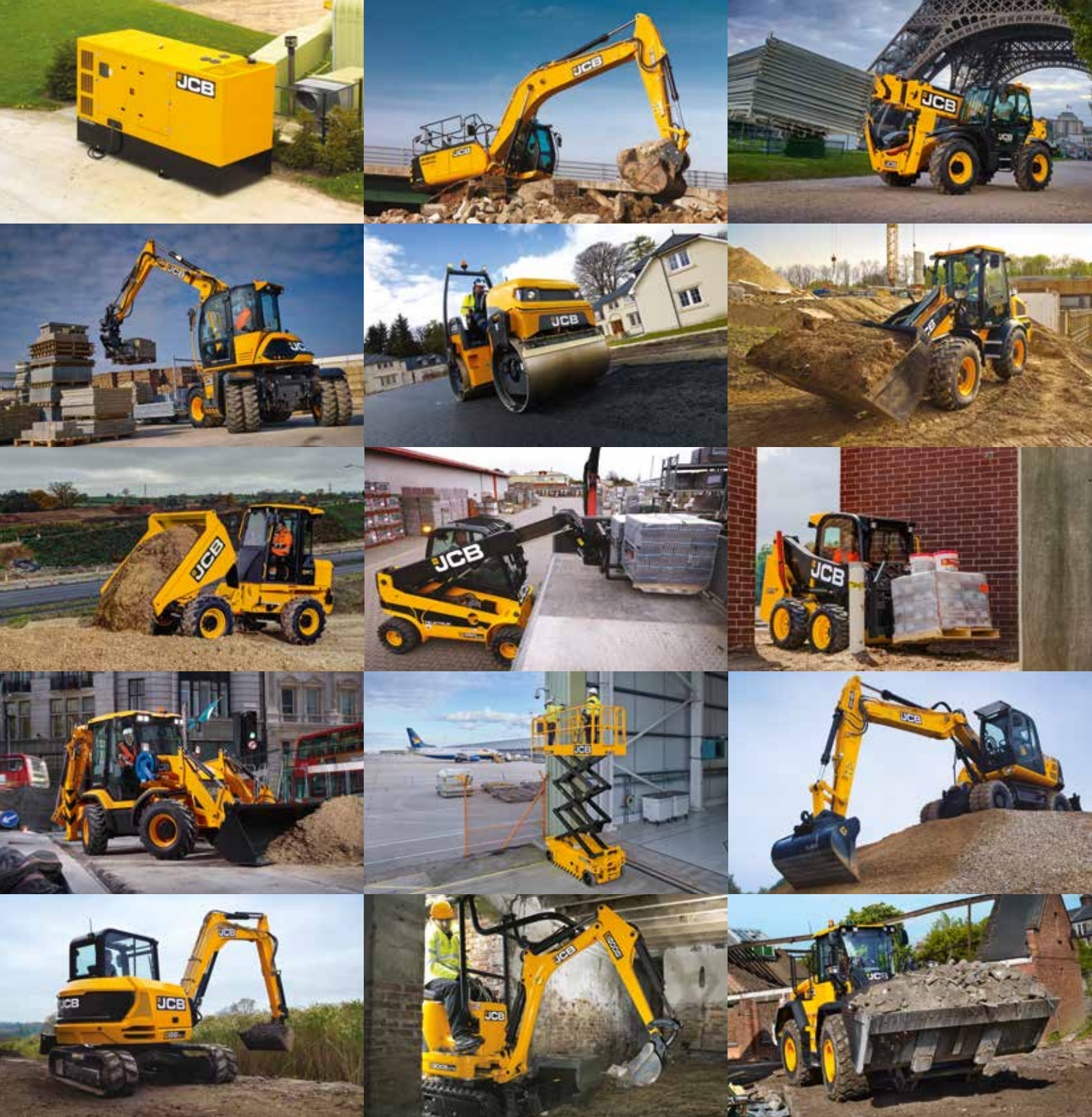
Model		S1530E	S1930E	S2032E	S2046E	S2632E	S2646E	S3246E	S4046E	S4550E
Max. platform height	m (ft-in)	4.6 (15-1)	5.8 (19-0)	6.3 (20-8)	6.3 (20-8)	8.1 (26-6)	8.1 (26-6)	10 (32-9)	11.9 (39-0)	13.8 (45-3)
Max. working height	m (ft-in)	6.6 (21-1)	7.8 (25-0)	8.3 (26-8)	8.3 (26-8)	10.1 (32-6)	10.1 (32-6)	12 (38-9)	13.9 (45-0)	15.8 (51-0)
Extension outreach	m (in)	0.9 (35)	0.9 (35)	0.9 (35)	0.9 (35)	0.9 (35)	0.9 (35)	0.9 (35)	0.9 (35)	0.9 (35)
Overall length (stowed)	m (ft-in)	1.78 (5-10)	1.78 (5-10)	2.39 (7-10)	2.39 (7-10)	2.39 (7-10)	2.39 (7-10)	2.39 (7-10)	2.39 (7-10)	2.76 (9-1)
Overall width (stowed)	m (ft-in)	0.76 (2-6)	0.76 (2-6)	0.81 (2-8)	1.15 (3-9)	0.81 (2-8)	1.15 (3-9)	1.15 (3-9)	1.15 (3-9)	1.25 (4-1)
Overall height (stowed, guardrail folded)	m (ft-in)	1.84 (6-0)	1.86 (6-1)	1.83 (6-0)	1.83 (6-0)	1.96 (6-5)	1.96 (6-5)	1.86 (6-1)	1.98 (6-6)	2.20 (7-3)
Overall height (stowed, guardrail unfolded)	m (ft-in)	2.11 (6-11)	2.12 (6-11)	2.22 (7-3)	2.22 (7-3)	2.35 (7-8)	2.35 (7-8)	2.48 (8-2)	2.60 (8-6)	2.60 (8-6)
Overall weight	kg (lb)	1330 (2932)	1526 (3364)	1834 (4044)	2134 (4705)	2062 (4546)	2528 (5574)	2646 (5834)	2996 (6606)	3366 (7422)

KEY SPECIFICATIONS – ELECTRIC SCISSORS

Model		S1530E	S1930E	S2032E	S2046E	S2632E
Platform size (L x W x H)	m	1.64 x 0.76 x 1.1	1.64 x 0.76 x 1.1	2.25 x 0.81 x 1.1	2.25 x 1.15 x 1.1	2.25 x 0.81 x 1.1
	in	65 x 30 x 43	65 x 30 x 43	89 x 32 x 43	89 x 46 x 43	89 x 32 x 43
Load capacity	kg (lb)	280 (615)	230 (505)	380 (840)	550 (1210)	250 (550)
Max. platform occupants (outdoor)	person	1	1	1	2	–
Max. platform occupants (indoor)	person	2	2	2	2	2
Max. allowable side force (indoor)	N (lbf)	400 (90)	400 (90)	400 (90)	400 (90)	400 (90)
Max. allowable side force (outdoor)	N (lbf)	200 (45)	200 (45)	200 (45)	400 (90)	–
Max. allowable wind speed (outdoor)	m/s / mph	12.5 / 28	12.5 / 28	12.5 / 28	12.5 / 28	–
Max. allowable slope (front/back)	degrees	3	3	3	3	3
Max. allowable slope (side/side)	degrees	1.5	1.5	1.5	1.5	1.5
Ground clearance (stowed)	m (in)	0.07 (2.75)	0.07 (2.75)	0.1 (4)	0.1 (4)	0.1 (4)
Wheelbase	m (in)	1.33 (52)	1.33 (52)	1.85 (73)	1.85 (73)	1.85 (73)
Turning radius (outside)	m (ft-in)	1.49 (4-11)	1.49 (4-11)	2.1 (6-11)	2.35 (7-8)	2.1 (6-11)
Turning radius (inside)	m (in)	0.04 (1.5)	0.04 (1.5)	0	0	0
Gradeability	%	30	25	25	25	25
Max driving speed (stowed)	km/h (mph)	3.0 (1.9)	3.0 (1.9)	3.2 (2)	3.2 (2)	3.2 (2)
Max driving speed (raised)	km/h (mph)	0.8 (0.5)	0.8 (0.5)	0.8 (0.5)	0.8 (0.5)	0.8 (0.5)
Rising speed (loaded)	s	15–20	15–20	25–30	25–30	30–35
Lowering speed (loaded)	s	28–33	25–30	30–35	30–35	35–40
Solid tyre dimensions	mm (in)	305 x 115 (12 x 4.5)	305 x 115 (12 x 4.5)	380 x 125 (15 x 5)	380 x 125 (15 x 5)	380 x 125 (15 x 5)
Hydraulic oil tank vol.	L (gal)	14 (3.7)	14 (3.7)	14 (3.7)	14 (3.7)	14 (3.7)
Hydraulic system tank vol.	L (gal)	18 (4.75)	18 (4.75)	18 (4.75)	18 (4.75)	18 (4.75)
Hydraulic system pressure	Mpa	24	24	24	24	24
Battery	Ah	6V x 4 (225)	6V x 4 (225)	6V x 4 (225)	6V x 4 (225)	6V x 4 (225)
Power unit	V DC (kW)	24 (3.3)	24 (3.3)	24 (3.3)	24 (3.3)	24 (3.3)
Input voltage of Charger	V AC	100–240	100–240	100–240	100–240	100–240
Output voltage of Charger	A	25	25	25	25	25
Drive and steer model		2, front-wheel	2, front-wheel	2, front-wheel	2, front-wheel	2, front-wheel
Brake		2, rear-wheel	2, rear-wheel	2, rear-wheel	2, rear-wheel	2, rear-wheel
Tyres		Non-marking	Non-marking	Non-marking	Non-marking	Non-marking

KEY SPECIFICATIONS – ELECTRIC SCISSORS

Model		S2646E	S3246E	S4046E	S4550E
Platform size (L x W x H)	m	2.25 x 1.15 x 1.1	2.25 x 1.15 x 1.1	2.25 x 1.15 x 1.1	2.64 x 0.81 x 1.1
	in	89 x 46 x 43	89 x 46 x 43	89 x 46 x 43	104 x 32 x 43
Load capacity	kg (lb)	450 (990)	320 (705)	320 (705)	227 (500)
Max. platform occupants (outdoor)	person	2	1	1	–
Max. platform occupants (indoor)	person	2	2	2	2
Max. allowable side force (indoor)	N (lbf)	400 (90)	400 (90)	400 (90)	400 (90)
Max. allowable side force (outdoor)	N (lbf)	400 (90)	200 (45)	200 (45)	–
Max. allowable wind speed (outdoor)	m/s / mph	12.5 / 28	12.5 / 28	12.5 / 28	–
Max. allowable slope (front/back)	degrees	3	3	3	3
Max. allowable slope (side/side)	degrees	1.5	1.5	1.5	1.5
Ground clearance (raised)	m (in)	0.1 (4)	0.1 (4)	0.1 (4)	0.1 (4)
Wheelbase	m (in)	1.85 (73)	1.85 (73)	1.85 (73)	2.22 (87)
Turning radius (outside)	m (ft-in)	2.35 (7-8)	2.35 (7-8)	2.35 (7-8)	2.56 (8-5)
Turning radius (inside)	m (in)	0	0	0	0
Gradeability	%	25	25	25	25
Max driving speed (stowed)	km/h (mph)	3.2 (2)	3.2 (2)	3.2 (2)	3.2 (2)
Max driving speed (raised)	km/h (mph)	0.8 (0.5)	0.8 (0.5)	0.8 (0.5)	0.8 (0.5)
Rising speed (loaded)	Seconds	30~35	53~58	63~68	75~85
Falling speed (loaded)	Seconds	35~40	40~45	45~50	55~63
Solid tyre dimensions	mm (in)	380 x 125 (15 x 5)	380 x 125 (15 x 5)	380 x 125 (15 x 5)	380 x 125 (15 x 5)
Hydraulic oil tank vol.	L (gal)	14 (3.7)	14 (3.7)	16 (4)	16 (4)
Hydraulic system tank vol.	L (gal)	18 (4.75)	22 (5.8)	22 (5.8)	25 (6.6)
Hydraulic system pressure	Mpa	24	24	24	24
Battery	Ah	6V x 4 (240)	6V x 4 (240)	12V x 4 (150)	12V x 4 (150)
Power unit	V DC (kW)	24 (3.3)	24 (3.3)	24 (3.3)	24 (4.5)
Input voltage of Charger	V AC	100~240	100~240	100~240	100~240
Output voltage of Charger	A	25	25	25	25
Drive and steer model		2, front-wheel	2, front-wheel	2, front-wheel	2, front-wheel
Brake		2 rear-wheel	2 rear-wheel	2 rear-wheel	2 rear-wheel
Tyres		Non-marking	Non-marking	Non-marking	Non-marking



ONE COMPANY, OVER 300 MACHINES.

Your nearest JCB dealer

Electric Scissors

Platform height 4.6m (15'1") to 13.8m (45' 3")

JCB Access Limited, Rokester, Staffordshire,
United Kingdom ST14 5JP.
Tel: +44 (0)1889 590312 Email: salesinfo@jcb.com

Download the very latest information on this product range
at: www.jcb.com



9999/6002 11/18 en-GB Issue 2



©2009 JCB Sales. All rights reserved. No part of this publication may be reproduced, stored in a retrieval system, or transmitted in any form or by any other means, electronic, mechanical, photocopying or otherwise, without prior permission from JCB Sales. All references in this publication to operating weights, sizes, capacities and other performance measurements are provided for guidance only and may vary dependant upon the exact specification of machine. They should not therefore be relied upon in relation to suitability for a particular application. Guidance and advice should always be sought from your JCB Dealer. JCB reserves the right to change specifications without notice. Illustrations and specifications shown may include optional equipment and accessories. All images are correct at time of print. The JCB logo is a registered trademark of J.C. Bamford Excavators Ltd.